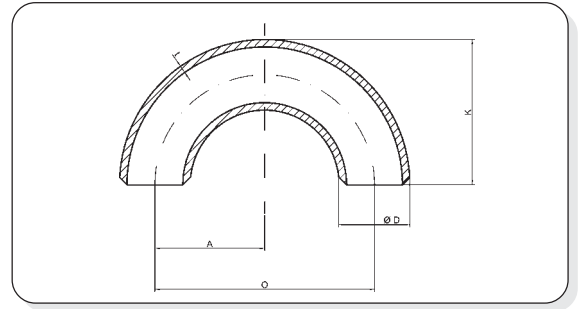


## Codo R.L. 180°

### ANSI B-16.9



NPS	Ø ext.	Centro a centro O	K	SCH 10	SCH 20	SCH 30	STD	SCH 40	SCH 60	XS	SCH 80	SCH 100	SCH 120	SCH 140	SCH 160	X.X.S.
½"	21	76	48			2.41	2.77 0.16			3.73 0.35					4.78 0.43	7.47
¾"	27	76 (2)	51 (2)			2.41	2.87 0.16			3.91 0.35					5.56 0.43	7.82
1"	33	76	56			2.90	3.38 0.31			4.55 0.40					6.35 0.53	9.09 0.69
1¼"	42	95	70			2.97	3.56 0.50			4.85 0.70					6.35 0.88	9.70 1.22
1½"	48	114	83			3.18	3.68 0.73			5.08 1.20					7.13 1.36	10.16 1.80
2"	60	152	106			3.18	3.91 1.30			5.54 1.88					8.74 3.00	11.07 3.40
2½"	73	191	132			4.78	5.16 2.57			7.01 3.40					9.52 4.67	14.02 6.40
3"	89	229	159			4.78	5.49 4.07			7.62 5.50					11.13 8.03	15.24 10.35
3½"	102	267	184			4.78	5.74 5.74			8.08 7.90						
4"	114	305	210			4.78	6.02 7.80			8.56 10.80		11.13 13.90			13.50 17.00	17.12 20.60
5"	141	381	262				6.55 13.00			9.52 17.70		12.70 25.24			15.87 30.87	19.05 36.23
6"	168	457	313				7.11 20.40			10.97 30.70		14.27 39.26			18.26 54.00	21.95 59.50
8"	219	610	414		6.35 33.14	7.03 34.98	8.18 40.60	10.31 53.12	12.70 59.80	15.09 76.00	18.26 81.00	20.62 104.00	23.01 110.00	25.40 110.00	28.57 110.00	22.23 109.00
10"	273	762	518		6.35 51.58	7.80 62.62	9.27 74.00	Utilizar X.S.	12.70 97.20	15.09 119.86	18.26 150.00	21.44 190.00	25.40 194.00	28.57 218.00	33.32 218.00	25.40 194.00
12"	324	914	619		6.35 74.46	8.38 92.12	9.52 108.00	10.31 116.30	14.27 165.25	17.48 140.00	21.44 198.85	25.40 246.00	28.57 280.00	33.32 314.00	25.40 360.00	25.40 280.00
14"	356	1067	711		6.35 114.94	7.92 119.86	Utilizar STD	9.52 136.00	11.13 159.93	15.09 222.46	12.70 188.70	19.05 270.00	23.83 376.00	27.79 380.00	31.75 448.00	35.71 495.00
16"	406	1219	813		6.35 165.24	7.92 156.18	9.52 178.40	Utilizar X.S.	16.66 322.34	12.70 249.50	21.44 404.00	26.19 520.00	30.96 548.00	36.53 646.00	40.49 734.00	
18"	457	1372	914		6.35 164.00	7.92 198.86	11.13 279.66	9.52 225.80	14.27 354.12	19.05 463.08	12.70 315.08	23.83 581.00	29.36 780.00	34.93 810.00	39.67 844.00	45.24 1090.00
20"	508	1524	1016		6.35 200.00	7.92 198.86	11.13 279.66	9.52 225.80	14.27 354.12	19.05 463.08	12.70 315.08	23.83 581.00	29.36 780.00	34.93 810.00	39.67 844.00	45.24 1090.00
22"	559	1676	1118		6.35 240.00	7.92 198.86	11.13 279.66	9.52 225.80	14.27 354.12	19.05 463.08	12.70 315.08	23.83 581.00	29.36 780.00	34.93 810.00	39.67 844.00	45.24 1090.00
24"	610	1829	1219		6.35 292.00	7.92 198.86	11.13 279.66	9.52 225.80	14.27 354.12	19.05 463.08	12.70 315.08	23.83 581.00	29.36 780.00	34.93 810.00	39.67 844.00	45.24 1090.00

(2) Las dimensiones O y K para ¾" puede ser O= 57 mm ; K= 43 mm, según la opción del fabricante.